

November 26, 2025

Client: G.M. Diemert Architect Inc.
957 4th Ave. E.,
Owen Sound, ON N4K 2N9

RE: Town of South Bruce Peninsula Town Hall
Wiarton, ON

Job #: 24099

Attn: Grant Diemert, OAA/Bryce Jaekel

ADDENDUM 03

MECHANICAL

Item 1

1.0 No mechanical content.

ELECTRICAL

Item 1

1.0 Reference Attached Reissued Drawing E101

- .1 On the site plan, circuits have been added for exterior lighting as per attached reissued drawing E101.

Item 2

2.0 Reference Attached Reissued Drawing E201

- .1 In the light fixture schedule, fixture type 'L9' added. Type 'P1' catalog numbers added. Type 'L2 and 'L2A' Lithonia fixture catalog numbers revised. Equals for fixture types 'L3', 'L6', 'L7', 'L8', 'B', 'C', 'W' and WA' added.

Item 3

3.0 Reference Attached Reissued Drawing E301

- .1 In Archives 016a the t bar ceiling grid has been deleted. Delete 20 (twenty) type 'LA' 2 x 2 fixtures and replace with 15 (fifteen) type 'L2' strip light fixtures. In Council Chambers/Meeting Rm 034a the type 'L9' fixture layout has been revised as per attached reissued drawing E301.
- .2 In Council Chambers 034a the 4 x 'DM' lighting controls to be revised to be 4 x '3B'. In Council Office 035 the '2B' lighting control revised to be 2 x '3B'. In Copy/Print Office Supply 016b the '3B' lighting control revised to be '2B'. In Executive Boardroom 037 revise the '3B' lighting control to be 3 x '3B'.
- .3 In Classroom/MP 033a, the lighting controls have been revised from 'DM' to be '3B' and the wall occupancy sensors to be ceiling mounted occupancy sensors.
- .4 In Reception 019a, Finance Reception 019b and Admin. Reception Print 019c lighting controls added as per reissued drawing E301.



- .5 Lighting control details G/G1/H/H1 added to drawing. Lighting control detail 'D' revised from 'Large Storage' to be 'Corridor'. Lighting detail 'F-Corridor multi-level occupancy control' deleted.
- .6 In lighting control detail 'A' photocontrol (PC) added for the lobby lighting.
- .7 Lighting controls added in Lobby 002, Lobby 032, Corridor 003, 019e, 031, and 039.
- .8 Light fixtures in front and rear vestibules to be unswitched (circuits revised to suit).
- .9 Switches added in each of the three future tenant spaces as per attached reissued drawing E301.

Item 4**4.0 Reference Attached Reissued Drawing E401**

- .1 In Council Chambers/Meeting Rm 034a provide 1" (27 mm) conduit under floor from devices noted back to A/V Storage 034d for future A/V wiring. In A/V Storage 034d and Coat Room 034e provide receptacles as per attached reissued drawing E401.
- .2 In Vestibule 001 the door operator push button has been relocated. Add card reader, door contact and electric strike RI.
- .3 At rear vestibule add card reader, door contact and electric strike RI.
- .4 At Lunchroom 019d exterior door add card reader, door contact and electric strike RI.
- .5 On plan 'C' (Enlarged main elec. rm. plan), contactor and timeclock added for exterior lighting control.

Item 5**5.0 Reference Attached Reissued Drawing E501**

- .1 In Panel 'P2' at circuits 'P2-45', 'P2-46', 'P2-47', and 'P2-48' provide 20A-1P breakers and label each as 'A/V Storage rec.'.
- .2 In Panel 'H2' at circuits H2-14, H2-15, H2-16, H2-17, and 'H2-18' provide 15A-1P breakers for exterior lighting and label as per attached reissued drawing E501.
- .3 Timeclock and contactor added at panel 'H2' for exterior lighting circuits.
- .4 Note box added to distribution riser diagram.



Kevin Fox, C.Tech.

Electrical Designer

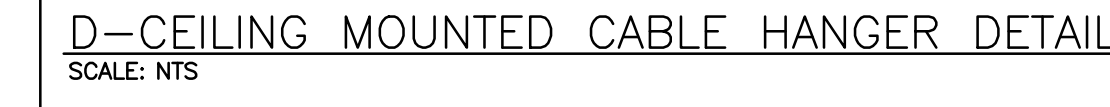
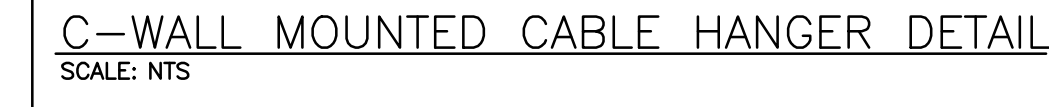
24099 Addendum 03 (E-Various)(var. reissued dwgs) Nov 26 25

kk



NOTES:

1. LED LUMEN VALUES QUOTED FOR FIXTURES ARE TO BE SPECIFIED MINIMUM, AND AS ABSOLUTE OR DELIVERED MAXIMUM. LUMEN VALUES MUST NOT EXCEED MORE THAN 10% OF SPECIFIED OUTPUT.
2. EQUAL MANUFACTURERS/SUPPLIERS MUST CONFIRM THE PROPOSED FIXTURE BY EMAIL WITH CONSULTANTS OFFICE A MINIMUM OF 10 DAYS PRIOR TO TENDER CLOSE.
3. WHERE NOTED ABOVE THAT FIXTURES ARE TO HAVE FINISH TO SUIT ARCHITECT THE FINISH WILL BE SELECTED FROM MANUFACTURER'S OPTIONAL COLOUR CHART (i.e. RAL COLOURS OR EQUIV.). PROVIDE THIS COLOUR CHART WITH SHOP DRAWING SUBMITTAL.
4. IF THERE ARE ANY DISCREPANCIES BETWEEN THE FIXTURE PART NUMBER AND DESCRIPTION, IT IS THE RESPONSIBILITY OF THIS CONTRACTOR TO BRING THESE TO THE ELECTRICAL CONSULTANT'S ATTENTION PRIOR TO TENDER CLOSE. NO EXTENSIVE WILL BE ENTERTAINED FOR FAILURE TO DO SO. FINAL FIXTURE CHARACTERISTICS AND DESCRIPTION WILL BE MARKED BY CONSULTANT AT TIME OF SHOP DRAWING REVIEW.



EQUIPMENT WIRING SCHEDULE																												M = MECHANICAL 0 = OTHERS								
Mechanical Item	Description	Provided By	Electrical Data			Starter			Ctrl Device	Isolating Device			Remote Items										Other	Interlock	Remarks											
			Voltage	Size In/Out/Amps	Phase	MDQP	Magnetic Manual	Combination Contactor		VFD	ECM	Hand/Off/Auto On/Off Selector	High/Low/Off	Pilot Light	Disconnect	Breaker/Fuse	Starter/Device Wired by Thermostat	RA Thermostat	Programmable Time Clock	Variable Speed Control	Current Sensor	Occ Sensor				Dust Voltage Relay	Interval Timer	VFD System Control Panel	Smoke Control System Panel	Control Panel	Wired By	Blg Auto System	Wired By	Miscellaneous 1	Miscellaneous 2	Interlock to
HWAC-1	PACKAGED ROOFTOP UNIT	M	575	MCA 27	3	30						E	E	E	M											M	M	M								
HWAC-2	PACKAGED ROOFTOP UNIT	M	575	MCA 20	3	25						E	E	E	M												M	M	M							
HWAC-3	PACKAGED ROOFTOP UNIT	M	575	MCA 20	3	25						E	E	E	M												M	M	M							
HWAC-4	PACKAGED ROOFTOP UNIT	M	575	MCA 20	3	25						E	E	E	M													M	M	M						
HWAC-5	PACKAGED ROOFTOP UNIT	M	575	MCA 12	3	15						E	E	E	M													M	M	M						
HWAC-6	PACKAGED ROOFTOP UNIT	M	575	MCA 20	3	25						E	E	E	M													M	M	M						
HWAC-7	PACKAGED ROOFTOP UNIT	M	576	MCA 11	3	15						E	E	E	M													M	M	M						
AC-1	INDOOR WALL MTD AC UNIT	M	208	MCA 1	1	15						E	E	E	M																					
CU-1	OUTDOOR CONDENSING UNIT	M	208	MCA 25	1	40						E	E	E																						
WH-1	DOMESTIC WATER HEATER	M	120	FHP	1	15						E	E	E																						
WH-2	DOMESTIC WATER HEATER	M	120	FHP	1	15						E	E	E																						
WVT-X	SINGLE TERMINAL CONTROL BOX	M	120	FHP	1	15						E	E	E	M																					
L-X	ELECTRONIC FAUCET	M	120	FHP	1	15						E	E	E																						
U-X	URINAL FLUSHING SYSTEM	M	120	FHP	1	15						E	E	E																						
ERV-1	ENERGY RECOVERY VENTILATOR	M	120	MCA 10.5	1	15						E	E	E			E																			
EF-1	ROOFTOP EXHAUST	M	120	FHP	1	15						E	E	E			E																			
EF-2	ROOFTOP EXHAUST	M	120	FHP	1	15						E	E	E			E																			
EF-3	ROOFTOP EXHAUST	M	120	FHP	1	15						E	E	E			E																			
EF-4	SIDEWALL EXHAUST FAN	M	120	FHP	1	15						E	E	E			M																			
EF-5	SIDEWALL EXHAUST FAN	M	120	FHP	1	15						E	E	E			M																			
MD-X	MOTORIZED DAMPER	M	120	FHP	1	15						E	E	E																						
DH-1	DH-1	M	208	FHP	1	15						E	E	E	M																					
UH-1	GAS FIRED UNIT HEATER	M	120	FHP	1	15						E	E	E	M																					
UH-2	GAS FIRED UNIT HEATER	M	120	FHP	1	15						E	E	E	M																					
UH-3	GAS FIRED UNIT HEATER	M	120	FHP	1	15						E	E	E	M																					
UH-4	GAS FIRED UNIT HEATER	M	120	FHP	1	15						E	E	E	M																					
UH-5	GAS FIRED UNIT HEATER	M	120	FHP	1	15						E	E	E	M																					
UH-6	GAS FIRED UNIT HEATER	M	120	FHP	1	15						E	E	E	M																					
RP-1	RECIRCULATION PUMP	M	120	FHP	1	15						E	E	E																						
TP-1	TRAP PRIMER STATION	M	120	FHP	1	15						E	E	E																						
MV-1	ELECTRONIC MIXING VALVE	M	120	FHP	1	15						E	E	E																						

HEATER SCHEDULE

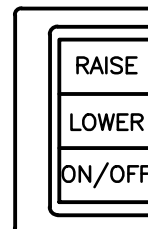
FOR INFORMATION REGARDING ECU, MANUFACTURERS REFER TO
 THE FOLLOWING WEBSITE: www.ecu.com

Item	Manufacturer/Catalog Number
A	750 WATT 347 VOLT SINGLE PHASE BASEBOARD HEATER C/W INTERNAL THERMOSTAT AND STANDARD FACTORY FINISH TO SUIT ARCHITECT. (OUTLET CAT. #J0M0157-109) 1500WATT CAT. #J0M0157-109
B	1500 WATT 347 VOLT SINGLE PHASE BASEBOARD HEATER C/W INTERNAL THERMOSTAT AND STANDARD FACTORY FINISH TO SUIT ARCHITECT. (OUTLET CAT. #J0M0157-109)
C	3000 WATT 347 VOLT SINGLE PHASE FAN FORCED HEATER C/W SURFACE MOUNTING BOX, INTERNAL TAMPERPROOF THERMOSTAT AND STANDARD FACTORY FINISH TO SUIT ARCHITECT. (OUTLET CAT. #J0K03007-1 C/W KIT-040-651)
D	4000 WATT 347 VOLT SINGLE PHASE FAN FORCED HEATER C/W SURFACE MOUNTING BOX, INTERNAL TAMPERPROOF THERMOSTAT AND STANDARD FACTORY FINISH TO SUIT ARCHITECT. (OUTLET CAT. #J0K04007-1 C/W KIT-040-651)
E	3000 WATT 347 VOLT SINGLE PHASE UNIT ON C/W BUILT-IN THERMOSTAT AND STANDARD FACTORY FINISH TO SUIT ARCHITECT. PROVIDE DISCONNECT. 1500WATT CAT. #J0K03007M-1

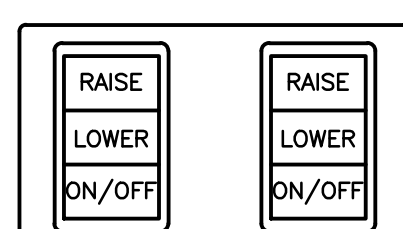
Revision History	
Drawing Name DETAILS AND SCHEDULES	
Drawing Number: E201	Project Number: 2404
ORIGINAL DRAWING SIZE: ARCH E (122)	

NOTES

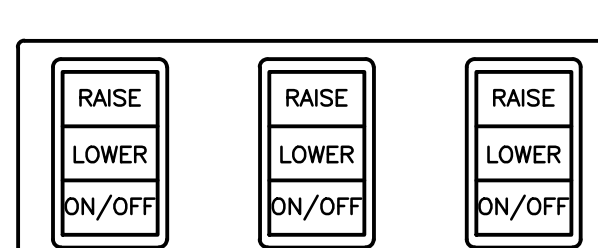
1. INDICATED DEVICE TO BE CEILING MOUNTED. PROVIDE ADEQUATE SUPPORT.
2. INDICATES POWER PACK INSTALLED WITHIN ACCESSIBLE CEILING SPACE FOR CONTROL OF NOTED MOTION SENSOR(S). REFER TO LIGHTING CONTROL DETAILS.
3. INDICATES DIGITAL ROOM CONTROLLER POWER PACK INSTALLED WITHIN ACCESSIBLE CEILING SPACE. QUANTITY OF RELAYS TO SUIT QUANTITY OF ZONES IN SPACE CONTROLLED AS SHOWN. REFER TO LIGHTING CONTROL DETAILS.
4. INDICATES LED UNDER CABINET LIGHT FIXTURE (TYPE "L1") MOUNTED TO UNDERSIDE OF UPPER CABINETS AT LENGTHS TO SUIT VARIOUS CABINET ARRANGEMENTS.
5. INDICATES LOCATION OF EXTERIOR LIGHT. REFER TO SITE PLAN FOR FURTHER INFORMATION.
6. FIXTURES IN THIS ROOM ARE TO BE SUSPENDED ON CHAIN TO 2700mm AFF. CO-ORDINATE WITH MECHANICAL SERVICES. MAINTAIN MAXIMUM HEADROOM.
7. EXACT LOCATION OF FIXTURES IN THIS ROOM ARE TO BE CO-ORDINATED WITH MECHANICAL EQUIPMENT PRIOR TO INSTALLATION. SUSPEND FIXTURE BUT MAINTAIN MAXIMUM HEADROOM.
8. INDICATED COMBO UNIT IN AREA OPEN TO STRUCTURE TO BE ROD SUSPENDED. CONFIRM EXACT MOUNTING HEIGHT ON SITE WITH ARCHITECT.
9. PROVIDE LAMCOT TAG ON INDICATED SWITCH DENOTING "LOBBY LIGHTING CONTROL".



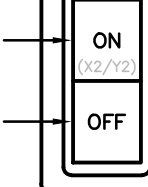
A1-SINGLE 3-BUTTON CONFIG.
SCALE: N.T.S.



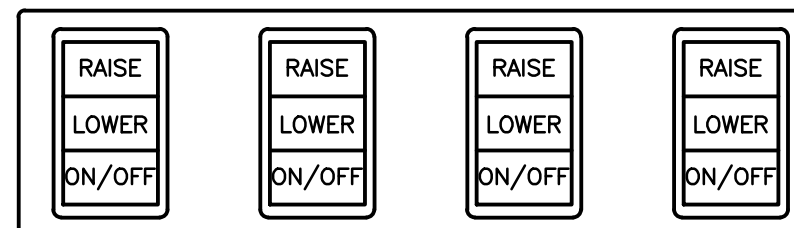
B1-DUAL 3-BUTTON CONFIG.
SCALE: N.T.S.



C1-TRIPLE 3-BUTTON CONFIG.
SCALE: N.T.S.



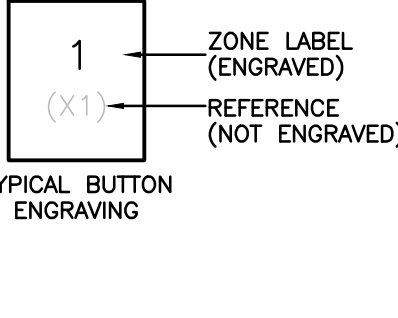
G1-SINGLE 2-BUTTON CONFIG.
SCALE: N.T.S.



H1-QUADRUPLE 3-BUTTON CONFIG.
SCALE: N.T.S.

NOTES:

1. REFER TO LIGHTING PLANS FOR GROUPINGS.
2. WALL STATION BUTTONS TO BE ENGRAVED WITH LABELS ACCORDING TO LEVEL AS NOTED. COORDINATE LABELS WITH OWNER. PROVIDE BUTTON ENGRAVING WORKSHEET WITH SHOP DRAWING SUBMISSION FOR REVIEW. WORKSHEETS TO BE COMPLETED FOR EACH CONTROL STATION GROUP. USE SINGLE MULTI-GANG FACEPLATE, FINISH PER SPECIFICATIONS.
3. REFER TO SPECIFICATIONS FOR INFORMATION REGARDING PROGRAMMING OF INPUT DEVICES AND DIGITAL WALL STATIONS PER ROOM TYPE.



NOTES:

1. IF STRUCTURE DOES NOT EXIST IMMEDIATELY ABOVE FIXTURE, PROVIDE UNSTRUCT CHANNEL SPANNING ACROSS STRUCTURE FOR FIXTURE SUSPENSION.
2. INDICATES INDEPENDENT SUSPENSION TO STRUCTURE THAT IS TO BE INCLUDED IN BASE TENDER TO SUIT SEISMIC RESTRAINT REQUIREMENTS.
3. IF SEISMIC RESTRAINT REQUIREMENTS ARE NOT REQUIRED AS PART OF THE SPECIFICATION, THEN THE FIXTURES ARE TO BE SUSPENDED TO STRUCTURE USING THIS METHOD.

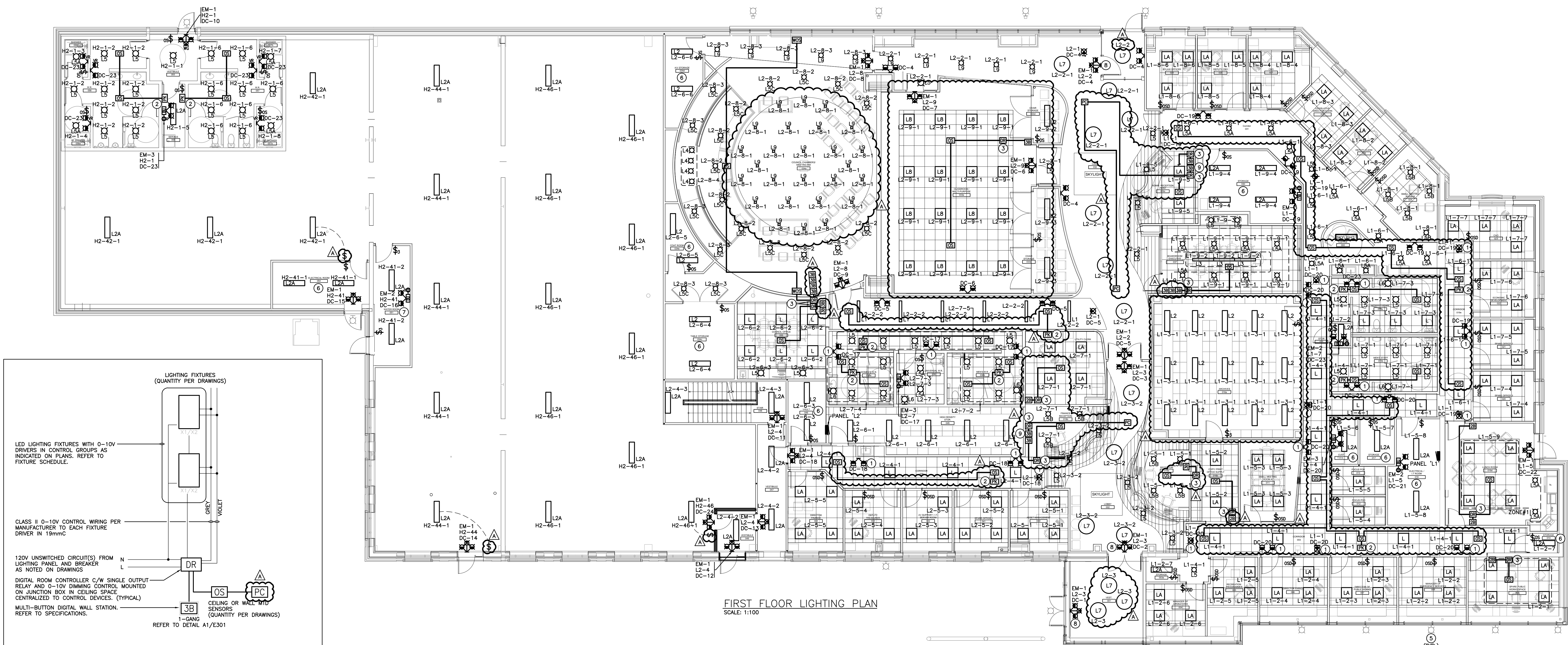
H-LUMINAIRE SUSPENSION DETAIL
SCALE: N.T.S.

NO.	DESCRIPTION OR CHANGE	DATE
1	ISSUED FOR TENDER	2023.11.04
2	ISSUED FOR REVIEW	2023.11.01
3	ISSUED FOR COORDINATION	2023.09.28
4	ISSUED	2023.09.04
5	ISSUED	2023.09.04

OWNER	PROJECT	DRAWING NUMBER	PROJECT NUMBER
Town of South Bruce Peninsula 315 George Street Windsor, N6A 2T2	New Townhall Offices 370 William Street, Windsor, Ontario	E301	2404
DESIGNER	DATE	SCALE	DATE
G. M. DIEMERT ARCHITECT INC. Suite 201 457 Fourth Avenue East Owen Sound, Ontario, N4K 2N5 Tel: 519-378-1975	2023.11.04	AS SHOWN	2023.11.04

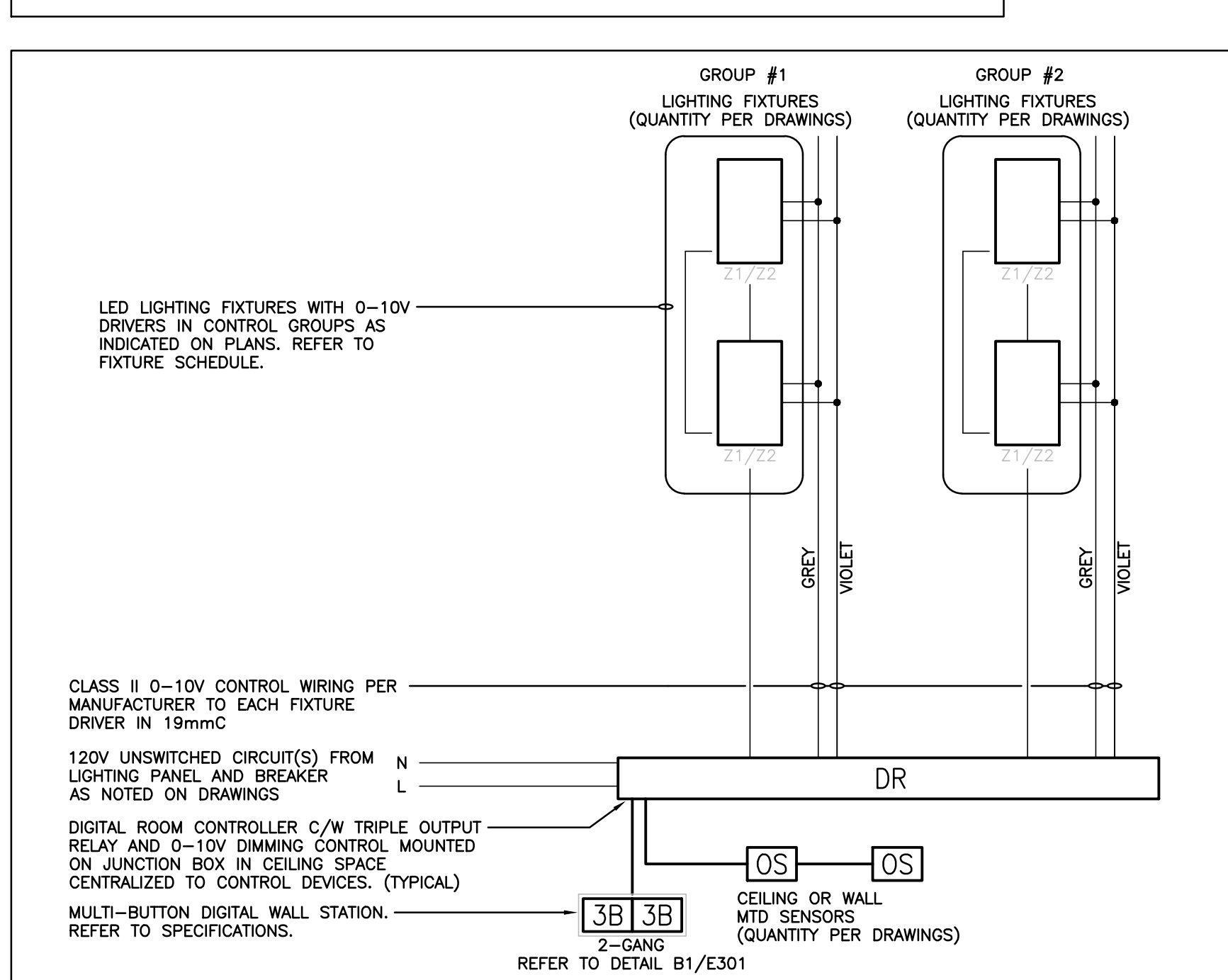
GROUND FLOOR PLAN LIGHTING RENOVATION

Original Drawing Size: ARCH E (1120 x 1525mm) (48" x 60")

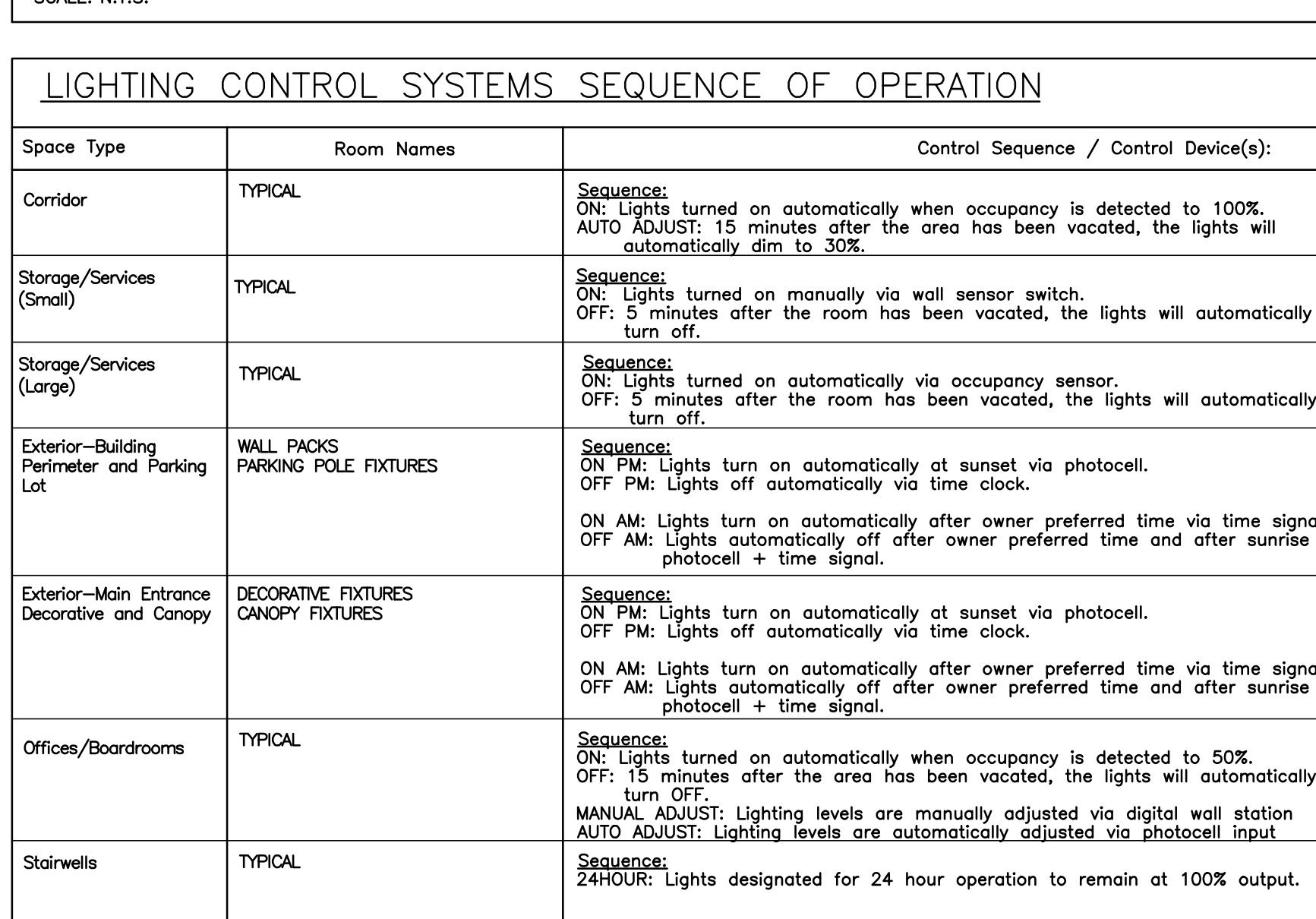


FIRST FLOOR LIGHTING PLAN
SCALE: 1:100

A-ONE ZONE MULTI-LEVEL OCCUPANCY CONTROL
SCALE: N.T.S.



B-TWO ZONE MULTI-LEVEL OCCUPANCY CONTROL
SCALE: N.T.S.



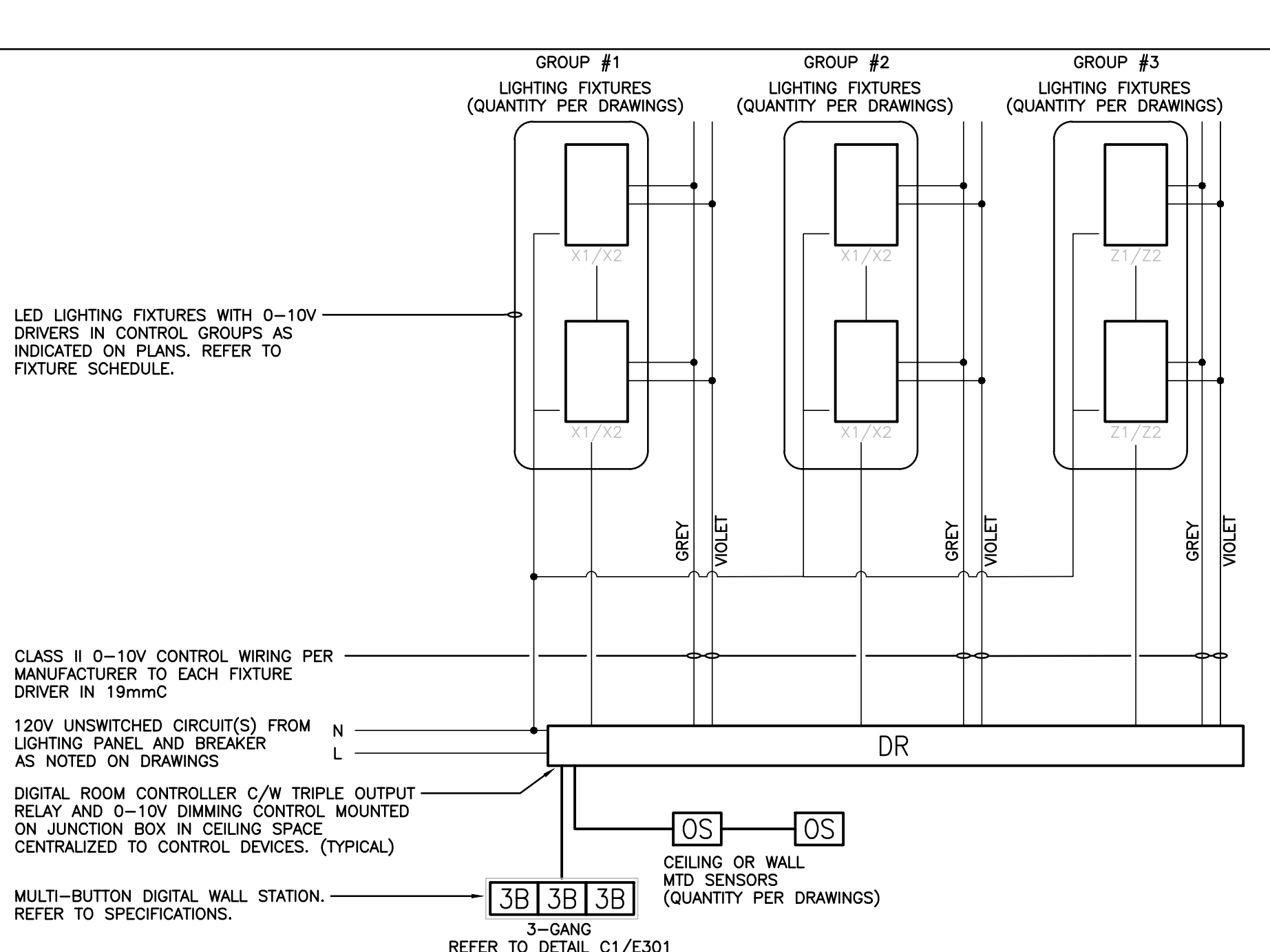
Space Type	Room Names	Control Sequence / Control Device(s)	Control System
Corridor	TYPICAL	Sequence: On: Lights turned on automatically when occupancy is detected to 100%. Auto Adjust: 15 minutes after the area has been vacated, the lights will automatically dim to 50%. Source: On: Lights turned on manually via wall sensor switch. Off: 5 minutes after the room has been vacated, the lights will automatically turn off.	DIGITAL ROOM CONTROL SYSTEM & OCCUPANCY SENSORS
Storage/Services (Small)	TYPICAL	Sequence: On: Lights turned on manually via wall sensor switch. Off: 5 minutes after the room has been vacated, the lights will automatically turn off.	LINE VOLTAGE OCCUPANCY CONTROL SYSTEM
Storage/Services (Large)	TYPICAL	Sequence: On: Lights turned on automatically via occupancy sensor. Off: 5 minutes after the room has been vacated, the lights will automatically turn off.	POWER PACK RELAY & OCCUPANCY SENSORS
Exterior-Building Perimeter and Parking Lot	WALL PACKS PARKING POLE FIXTURES	Sequence: On PM: Lights turn on automatically at sunset via photocell. Off PM: Lights off automatically via time clock. On AM: Lights turn on automatically after owner preferred time via time signal. Off AM: Lights automatically off after owner preferred time and after sunrise via photocell + time signal.	CIRCUITS THROUGH MULTI-POLE CONTACTORS, PHOTOCELL & TIME CLOCK
Exterior-Main Entrance Decorative and Canopy	DECORATIVE FIXTURES CANOPY FIXTURES	Sequence: On PM: Lights turn on automatically at sunset via photocell. Off PM: Lights off automatically via time clock. On AM: Lights turn on automatically after owner preferred time via time signal. Off AM: Lights automatically off after owner preferred time and after sunrise via photocell + time signal.	CIRCUITS THROUGH MULTI-POLE CONTACTORS, PHOTOCELL & TIME CLOCK
Offices/Boardrooms	TYPICAL	Sequence: On: Lights turned on automatically when occupancy is detected to 50%. Off: 15 minutes after the area has been vacated, the lights will automatically turn off. MANUAL ADJUST: Lighting levels are manually adjusted via digital wall station. AUTO ADJUST: Lighting levels are automatically adjusted via photocell input.	DIGITAL ROOM CONTROL SYSTEM, OCCUPANCY SENSORS & PHOTOCELL (PER ROOM BASIS)
Stairwells	TYPICAL	Sequence: 24 HOUR: Lights designated for 24 hour operation to remain at 100% output.	24 HOUR

SYSTEM DESCRIPTIONS:

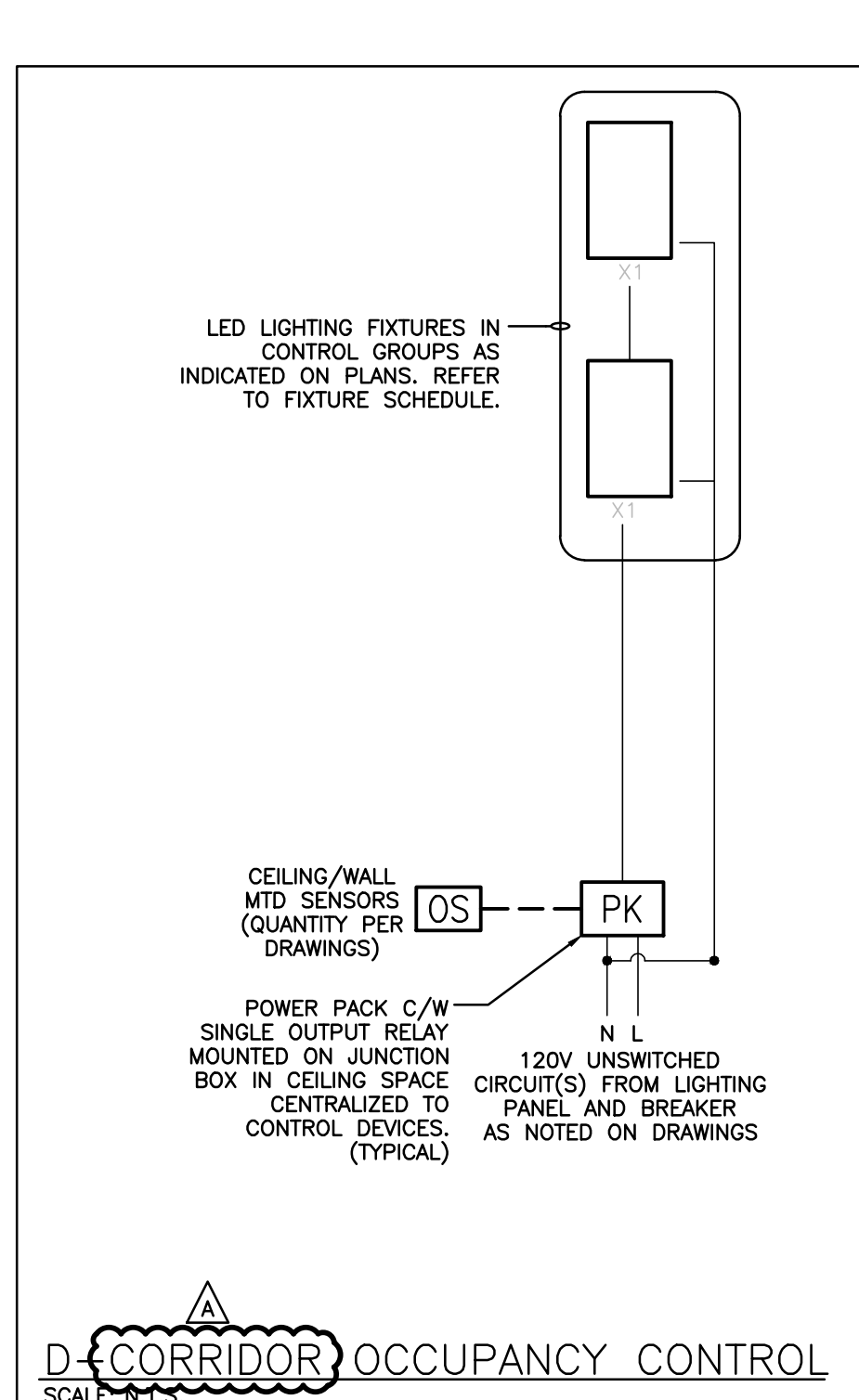
DIGITAL ROOM CONTROL (DRM) SYSTEM	LINE VOLTAGE OCCUPANCY CONTROL SYSTEM
DIGITAL ROOM CONTROL RELAY POWER PACKS C/W PLUG AND PLAY DIGITAL SENSORS AND WALL MOUNT CONTROL STATIONS. REFER TO SPECIFICATIONS SECTION 26 51 17.	LINE VOLTAGE WALL SENSOR SWITCHES AND LINE VOLTAGE POWER PACKS WITH HARD WIRED SENSORS. REFER TO SPECIFICATIONS SECTION 26 05 75.

NOTES:

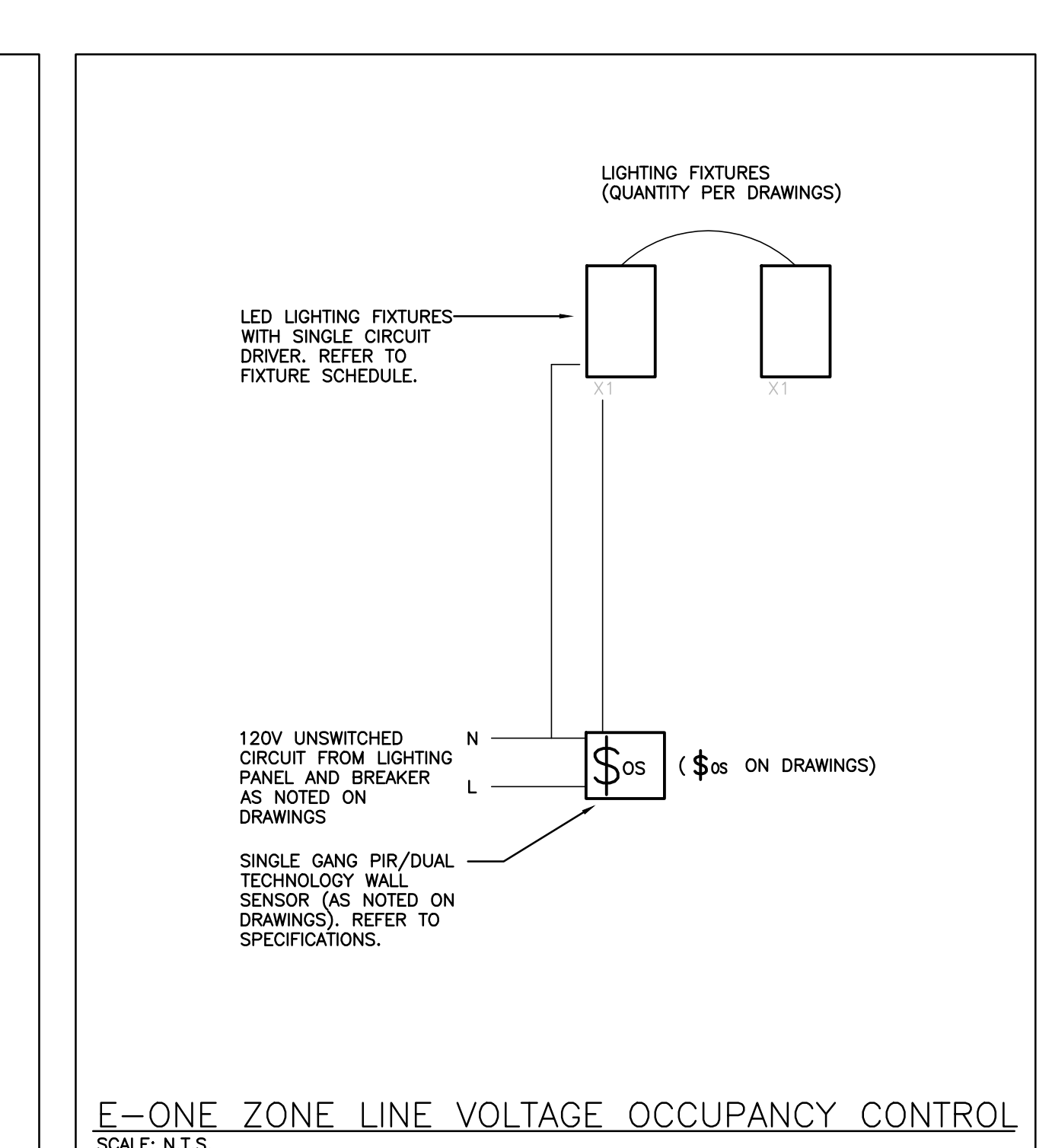
1. ALL INDICATED TIMES SHALL BE COORDINATED WITH OWNER. REPORT ANY DISCREPANCIES BETWEEN SEQUENCE AND CONTROL DEVICES TO ENGINEER PRIOR TO PROGRAMMING. COORDINATE PROGRAMMING OF ANY SPACES NOT LISTED WITH OWNER.
2. COORDINATE TIME CLOCK SETTINGS AND CONTACT CLOSURE SIGNAL INPUTS WITH OWNER.



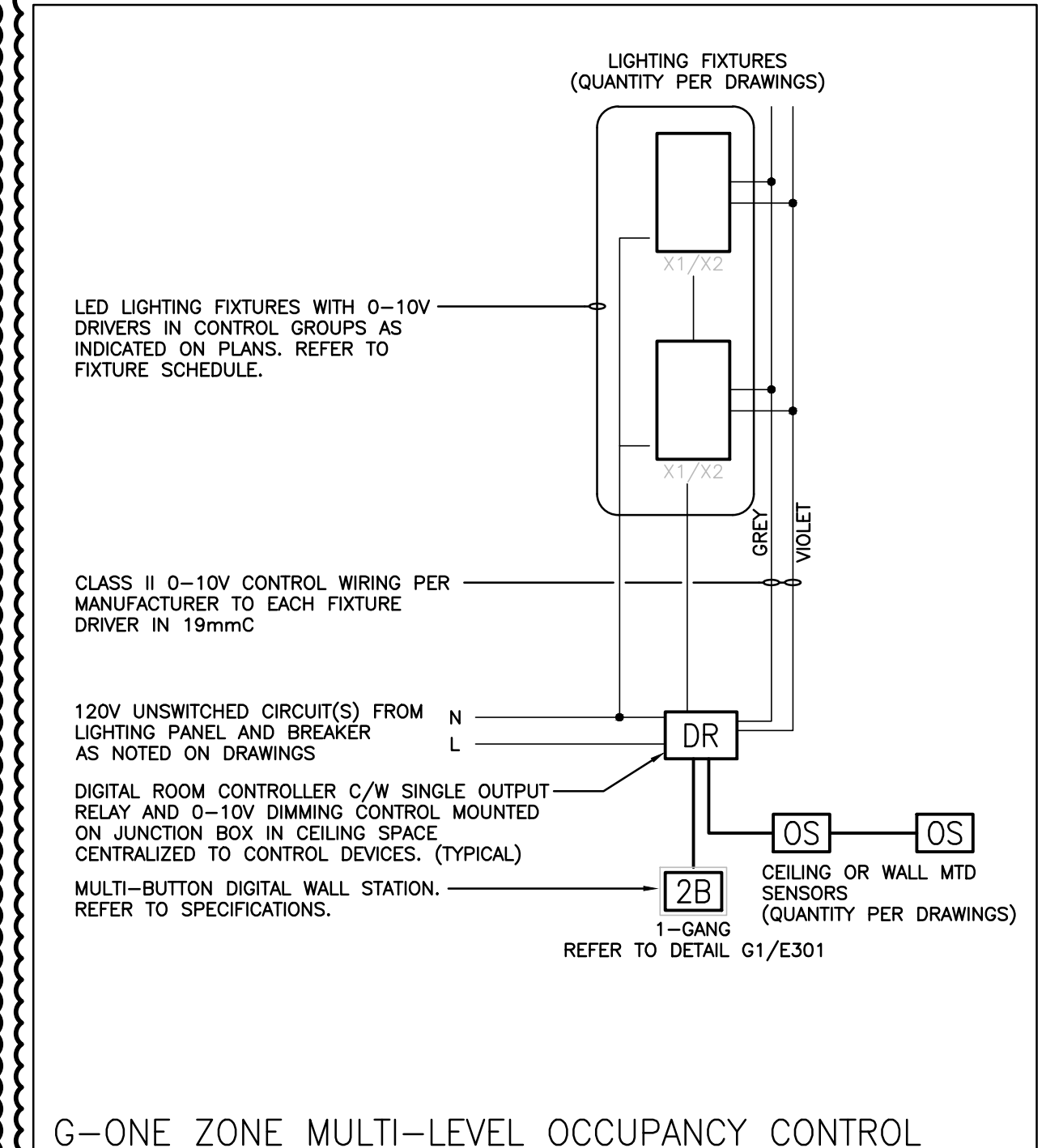
C-THREE ZONE MULTI-LEVEL CONTROL
SCALE: N.T.S.



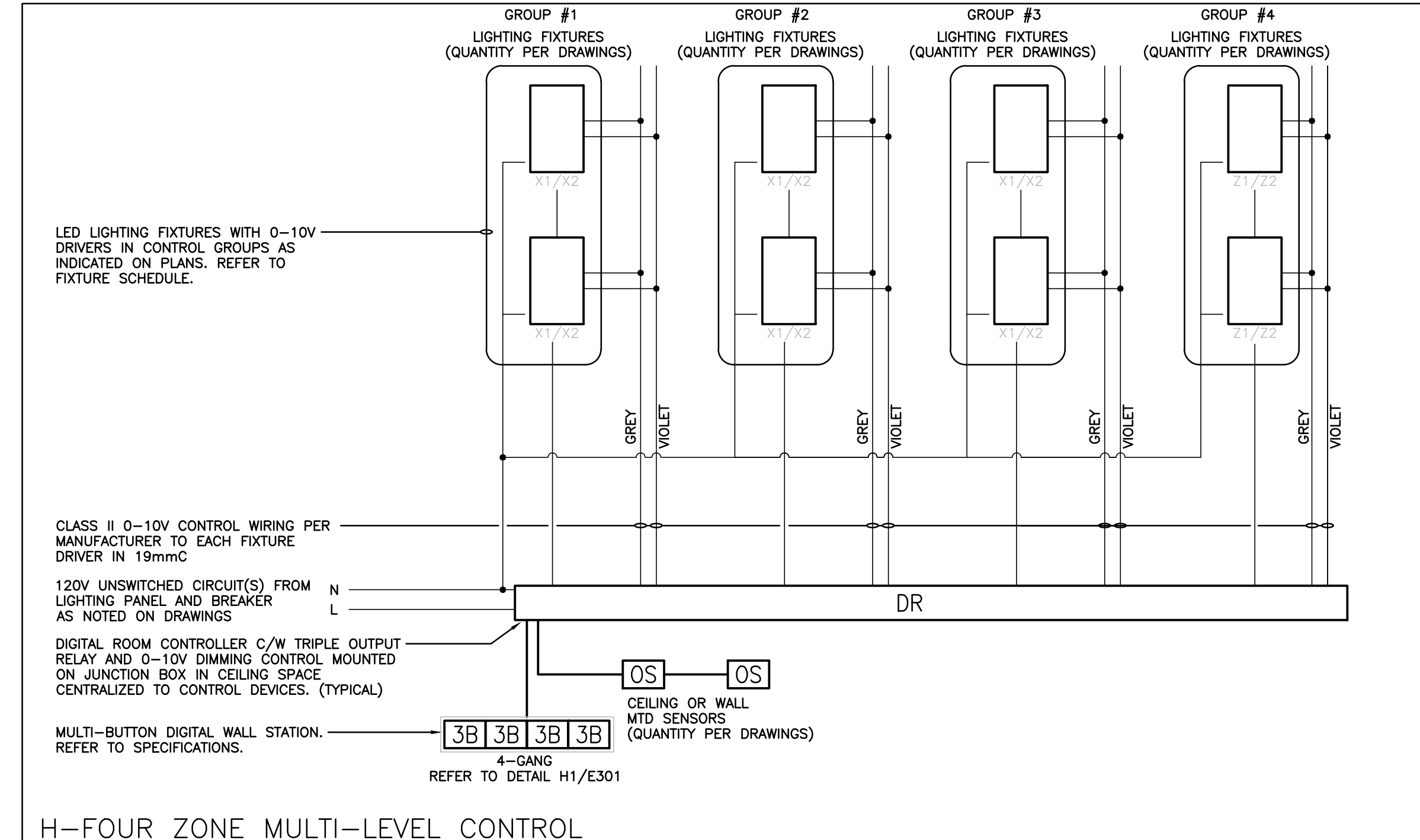
D-CORRIDOR OCCUPANCY CONTROL
SCALE: N.T.S.



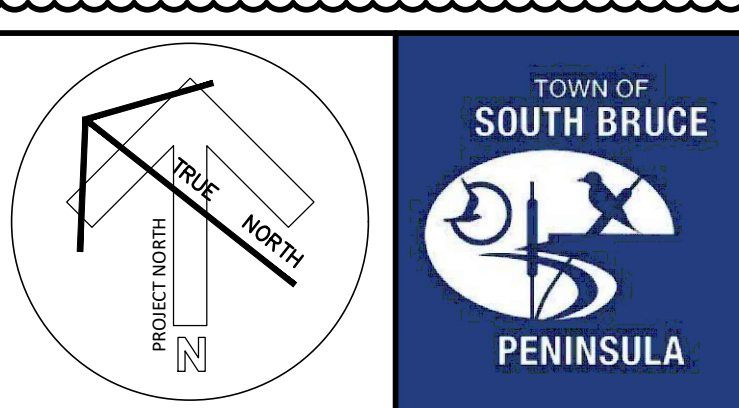
E-ONE ZONE LINE VOLTAGE OCCUPANCY CONTROL
SCALE: N.T.S.



G-ONE ZONE MULTI-LEVEL OCCUPANCY CONTROL
SCALE: N.T.S.



H-FOUR ZONE MULTI-LEVEL CONTROL
SCALE: N.T.S.

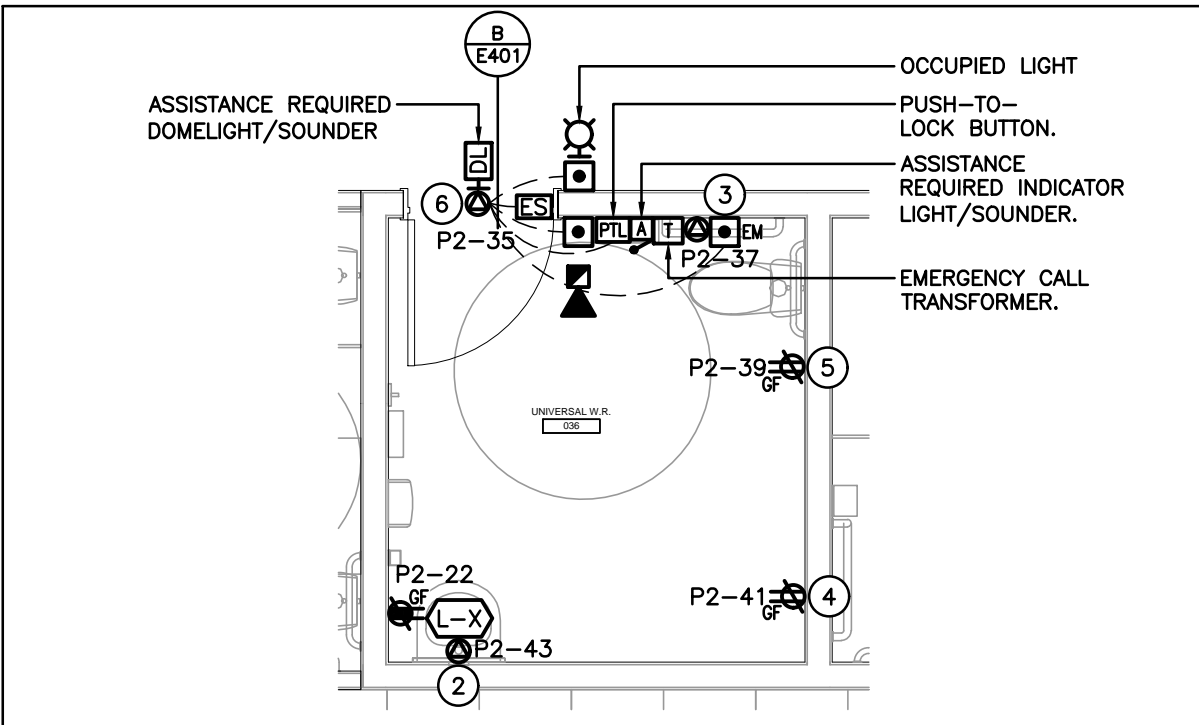


DEI
Consulting Engineers
MECHANICAL ELECTRICAL PLUMBING
1000 Highway 10, Windsor, Ontario N9A 6K5
Tel: 519-378-1975

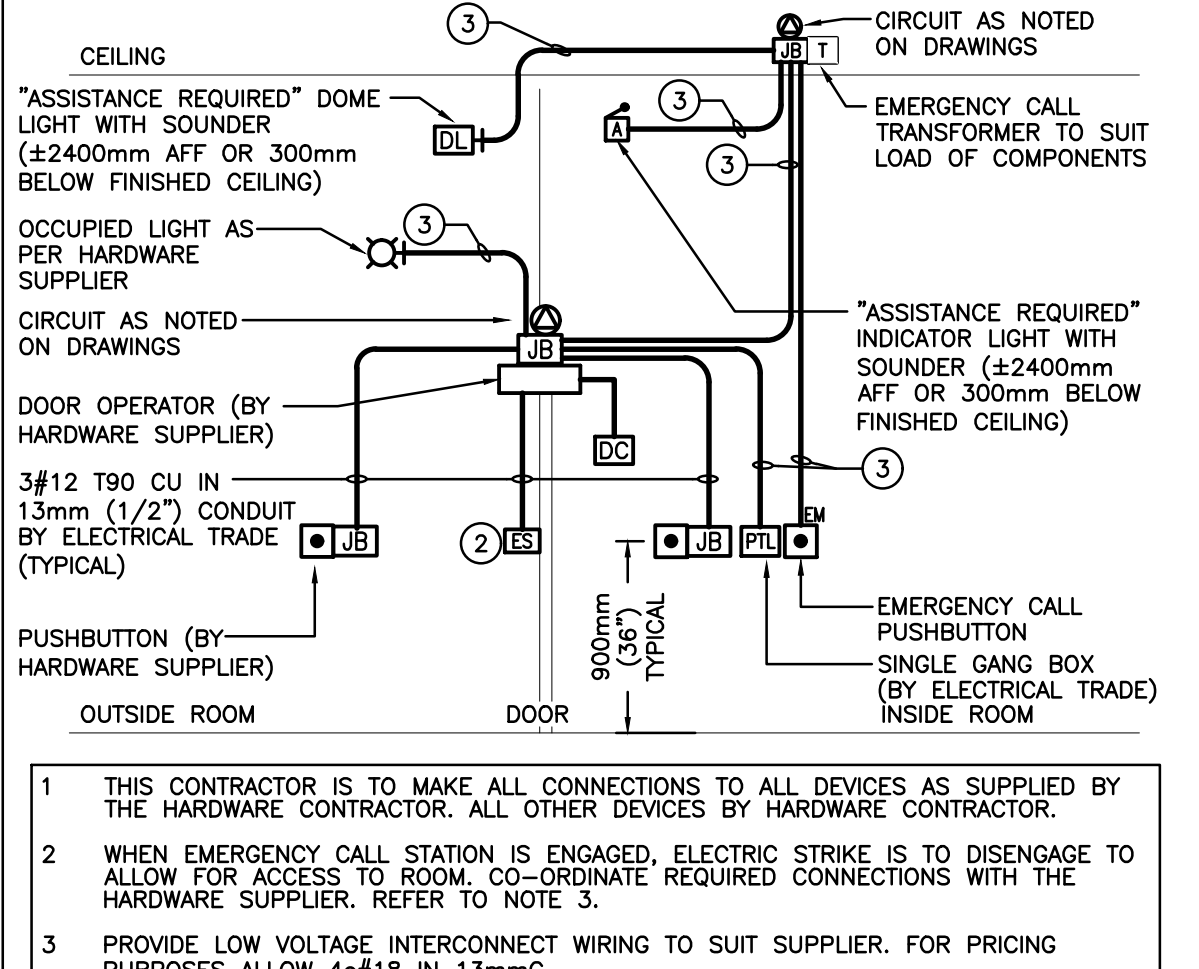
G. M. DIEMERT ARCHITECT INC.
Suite 201
457 Fourth Avenue East
Owen Sound, Ontario, N4K 2N5
Tel: 519-378-1975

NOTES

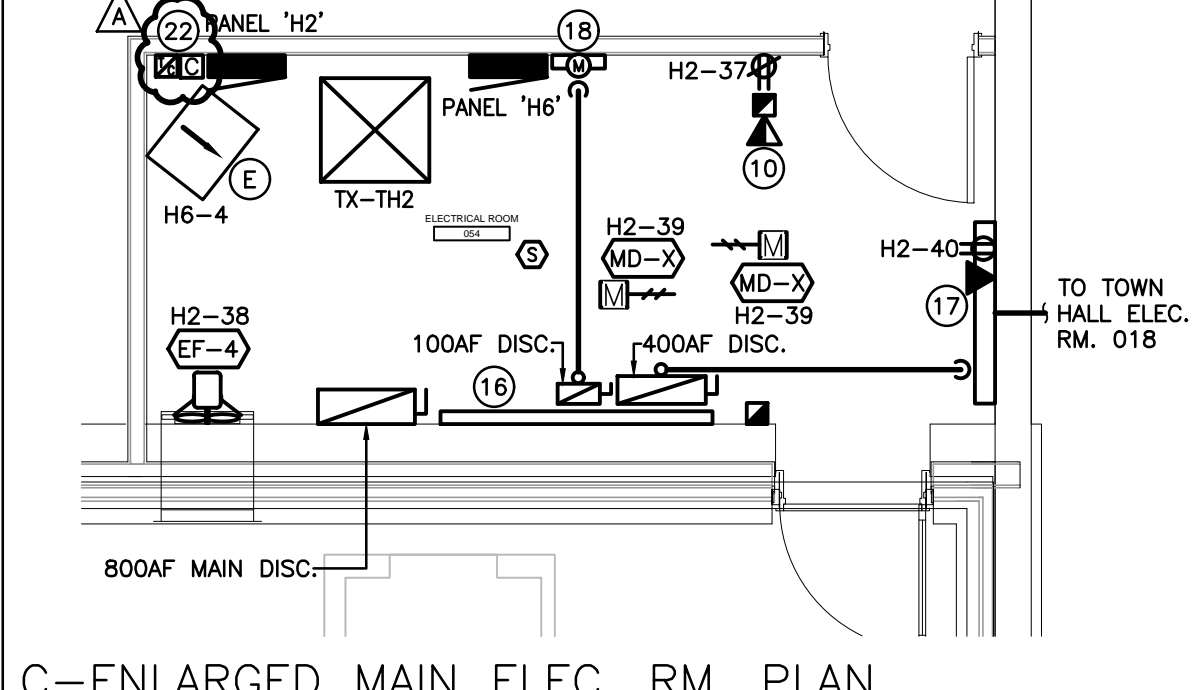
- INDICATES RECEPTACLE FOR OWNER'S UNDER COUNTER FRIDGE. CONFIRM EXACT LOCATION/MOUNTING HEIGHT WITH MILLWORK PROVIDER PRIOR TO ROUGH-IN.
- INDICATES CONNECTION FOR AUTOMATIC PLUMBING FIXTURE. CONFIRM LOCATION/ REQUIREMENTS WITH MECHANICAL TRADE PRIOR TO ROUGH-IN.
- FOR INFORMATION REGARDING EMERGENCY CALL STATION REFER TO PUBLIC ADDRESS SPECIFICATION SECTION.
- INDICATED RECEPTACLE FOR OWNER'S CHANGE TABLE. CONFIRM EXACT LOCATION/MOUNTING HEIGHT ON SITE.
- INDICATES RECEPTACLE MOUNTED AT HIGH LEVEL FOR FUTURE LIFT. CONFIRM EXACT LOCATION AND MOUNTING HEIGHT WITH SCHEDULE BOARD.
- INDICATES HANDICAP DOOR OPERATOR ROUGH-IN PER DETAIL C/W "PUSH TO LOCK" BUTTON (TO LOCK THE DOOR AND DISABLE THE EXTERIOR WALL SWITCH AND DOME LIGHT IN CORRIDOR. PUSHBUTTON HARDWARE PROVIDED BY DOOR HARDWARE SUPPLIER. THIS CONTRACTOR TO PROVIDE SINGLE GANG BOX ALONG WITH CONDUIT/CONNECTIONS AND DOME LIGHT AS SHOWN. REFER TO DETAIL B/E401.
- PROVIDE T-SLOT GROUND FAULT RECEPTACLE COMPLETE WITH "IN-USE" WEATHER-PROOF COVER. COORDINATE PLACEMENT WITH MECHANICAL TRADE. INDICATED DEVICE IS TO BE MOUNTED 3.56" (900mm) ABOVE FINISHED FLOOR LEVEL. CONTRACTOR TO VERIFY ON SITE IF WASH/HAU UNIT CONTAINS INTERNAL MAINTENANCE RECEPTACLE AND CONNECT NOTED BRANCH CIRCUIT TO IT IF AVAILABLE.
- INDICATES RECEPTACLE FOR OWNER'S MICROWAVE ON SHELF. CONFIRM EXACT LOCATION/MOUNTING HEIGHT WITH MILLWORK PROVIDER PRIOR TO ROUGH-IN.
- INDICATES RECEPTACLE FOR OWNER'S BELOW COUNTER MICROWAVE. CONFIRM EXACT LOCATION/MOUNTING HEIGHT WITH MILLWORK PROVIDER PRIOR TO ROUGH-IN.
- INDICATED FIRE ALARM HORN/STROBE TO BE SET TO LOW DB HORN OUTPUT.
- INDICATED AC UNIT FED FROM ASSOCIATED CONDENSING UNIT ON ROOF. REFER TO EQUIPMENT WIRING SCHEDULE.
- INDICATED EXHAUST FAN TO BE CONTROLLED WITH QS LIGHT SWITCH WITHIN THIS ROOM.
- INDICATES DEVICES FOR OWNER'S TV SCREEN. CONFIRM EXACT LOCATION/MOUNTING HEIGHT WITH OWNER PRIOR TO ROUGH-IN.
- INDICATES RECEPTACLE FOR OWNER'S BELOW COUNTER FRIDGE. CONFIRM EXACT LOCATION/MOUNTING HEIGHT WITH MILLWORK PROVIDER PRIOR TO ROUGH-IN.
- INDICATES FIRE ALARM ANNUNCIATOR AND PASSIVE GRAPHIC. REFER TO FIRE ALARM DRAWING.
- INDICATES 800A 347/600V 3PH 4W SPLITTER (1800mm LONG).
- INDICATES 1200mmX1200mm METER CABINET TO SUIT THE LOCAL UTILITY.
- INDICATES 100A 7-JAW METER AND BASE TO SUIT THE LOCAL UTILITY.
- INDICATES FIRE ALARM AND POWER CONNECTIONS TO COMBINATION FIRE/SMOKE DAMPER PER FIRE ALARM RISER DIAGRAM AND SPECIFICATIONS.
- INDICATED DEVICE TO BE MOUNTED AT THE TOP OF THE STAIR SHAFT.
- PROVIDE 1" UNDER FLOOR FROM NOTED DEVICE BACK TO AV STORAGE DASH FOR OWNER'S FUTURE AV WIRING.
- INDICATES CONTACTOR AND TIMELOCK FOR EXTERIOR LIGHTING CONTROL. REFER TO DISTRIBUTION RISER DIAGRAM.



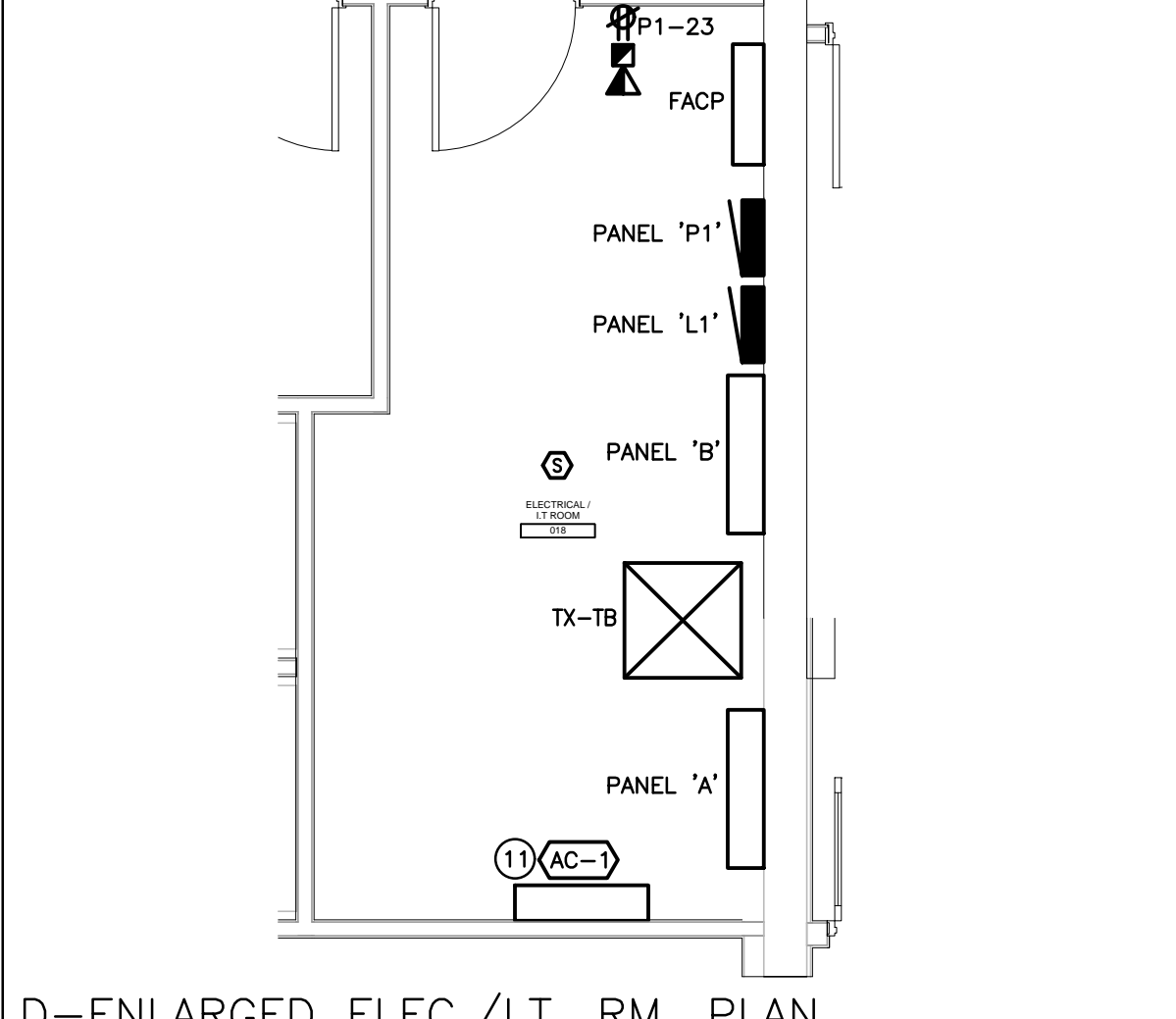
A-ENLARGED UNIVERSAL WR PLAN
SCALE: 1:50



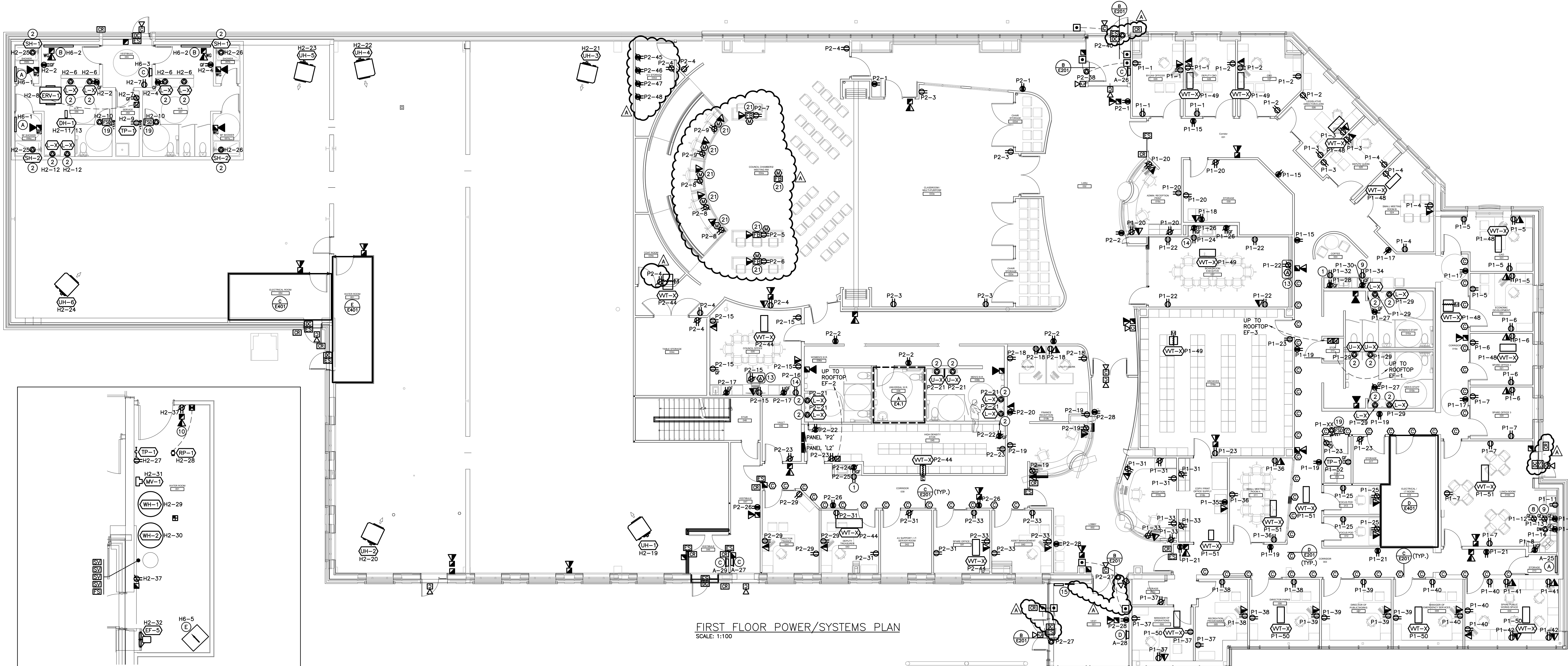
B-UNIVERSAL WASHROOM DEVICE INSTALLATION
SCALE: 1:50



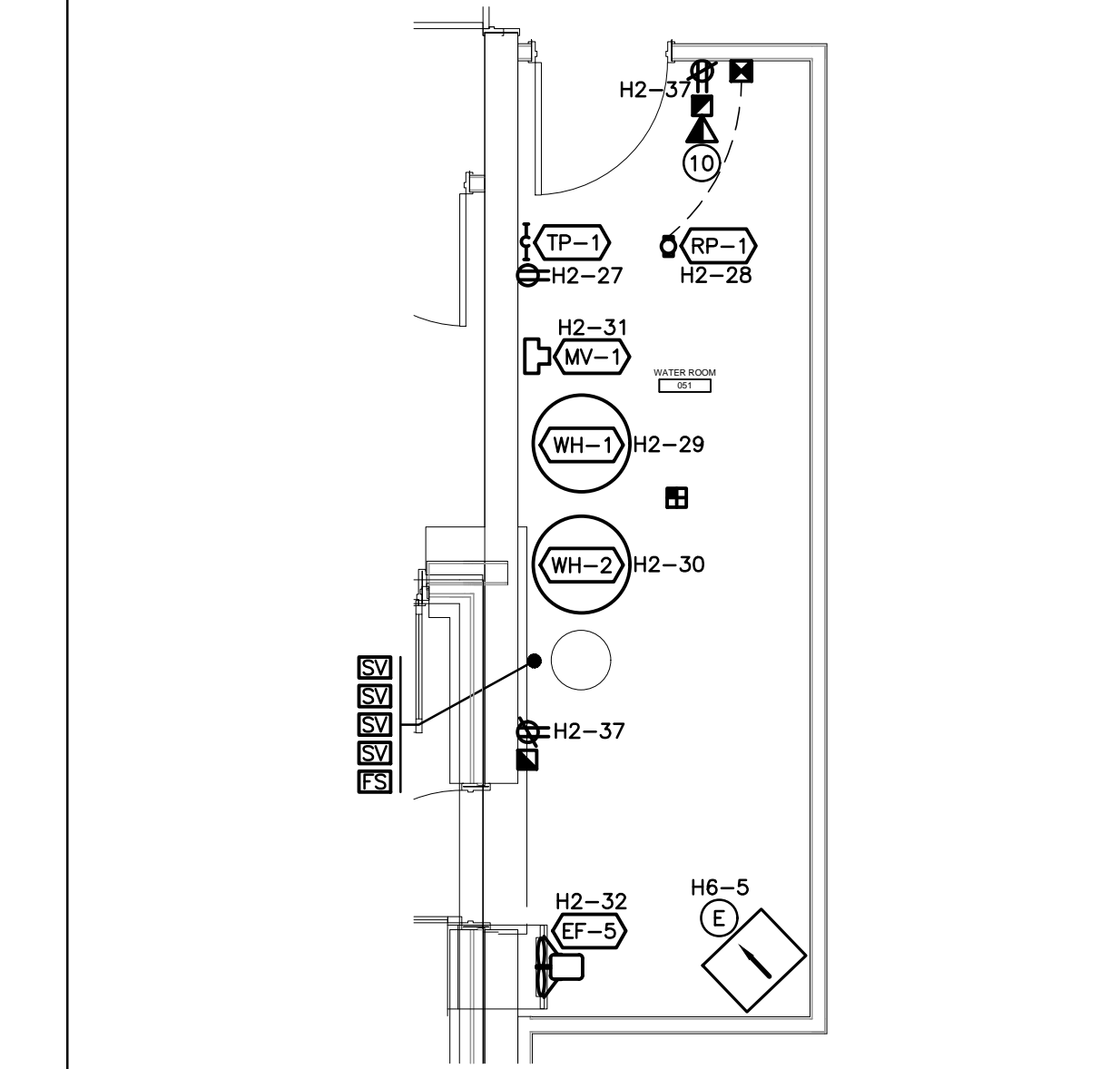
C-ENLARGED MAIN ELEC. RM. PLAN
SCALE: 1:50



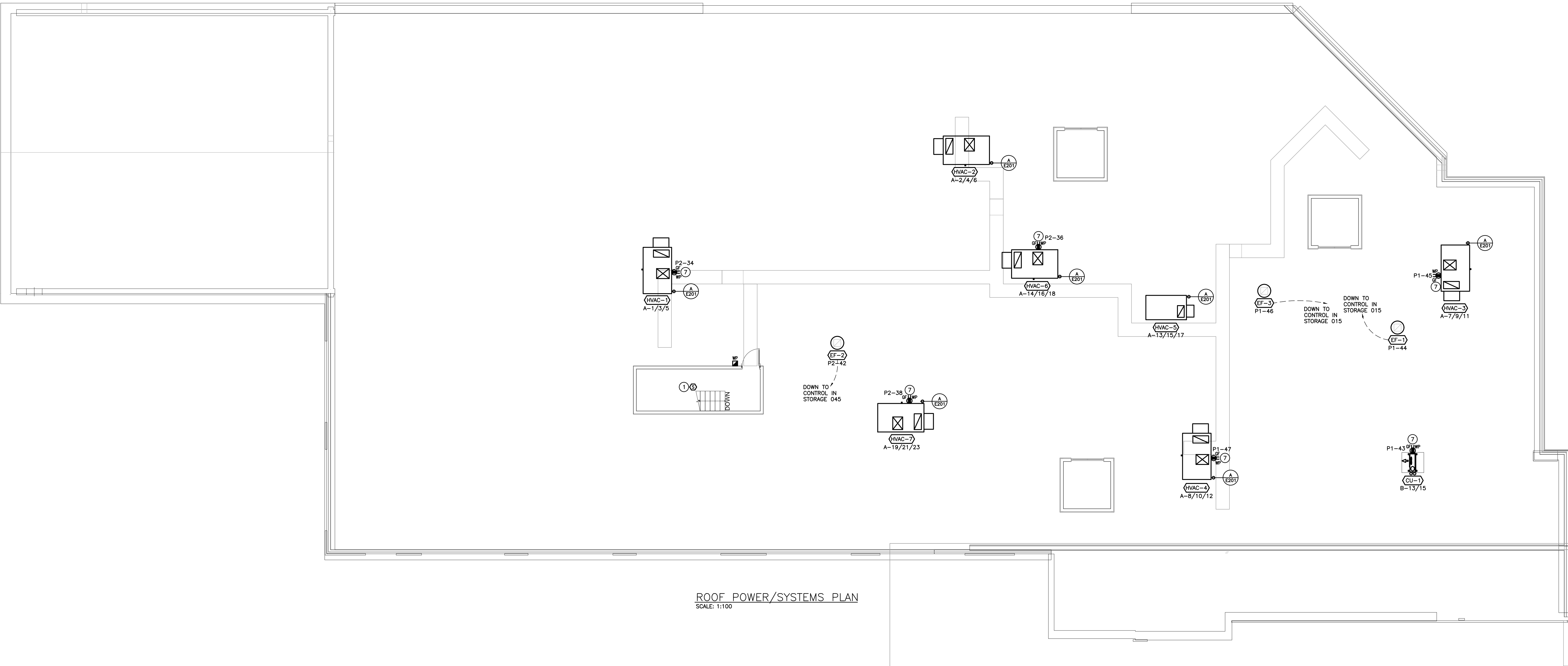
D-ENLARGED ELEC./I.T. RM. PLAN
SCALE: 1:50



FIRST FLOOR POWER/SYSTEMS PLAN
SCALE: 1:100



F-ENLARGED WATER ROOM 051 PLAN
SCALE: 1:50

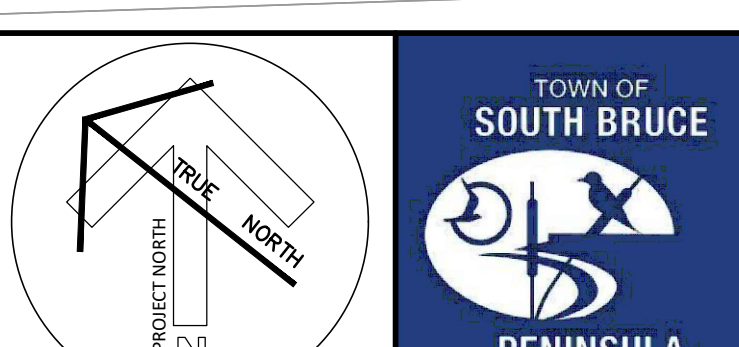


ROOF POWER/SYSTEMS PLAN
SCALE: 1:100

NO.	DESCRIPTION	DATE
1	ISSUED FOR TENDER	2020.11.04
2	ISSUED FOR CONSTRUCTION	2020.11.11
3	ISSUED FOR CONSTRUCTION	2020.11.11
4	ISSUED FOR CONSTRUCTION	2020.11.11
5	ISSUED FOR CONSTRUCTION	2020.11.11

NO.	DESCRIPTION	DATE
1	ISSUED FOR TENDER	2020.11.04
2	ISSUED FOR CONSTRUCTION	2020.11.11
3	ISSUED FOR CONSTRUCTION	2020.11.11
4	ISSUED FOR CONSTRUCTION	2020.11.11
5	ISSUED FOR CONSTRUCTION	2020.11.11

Revision History



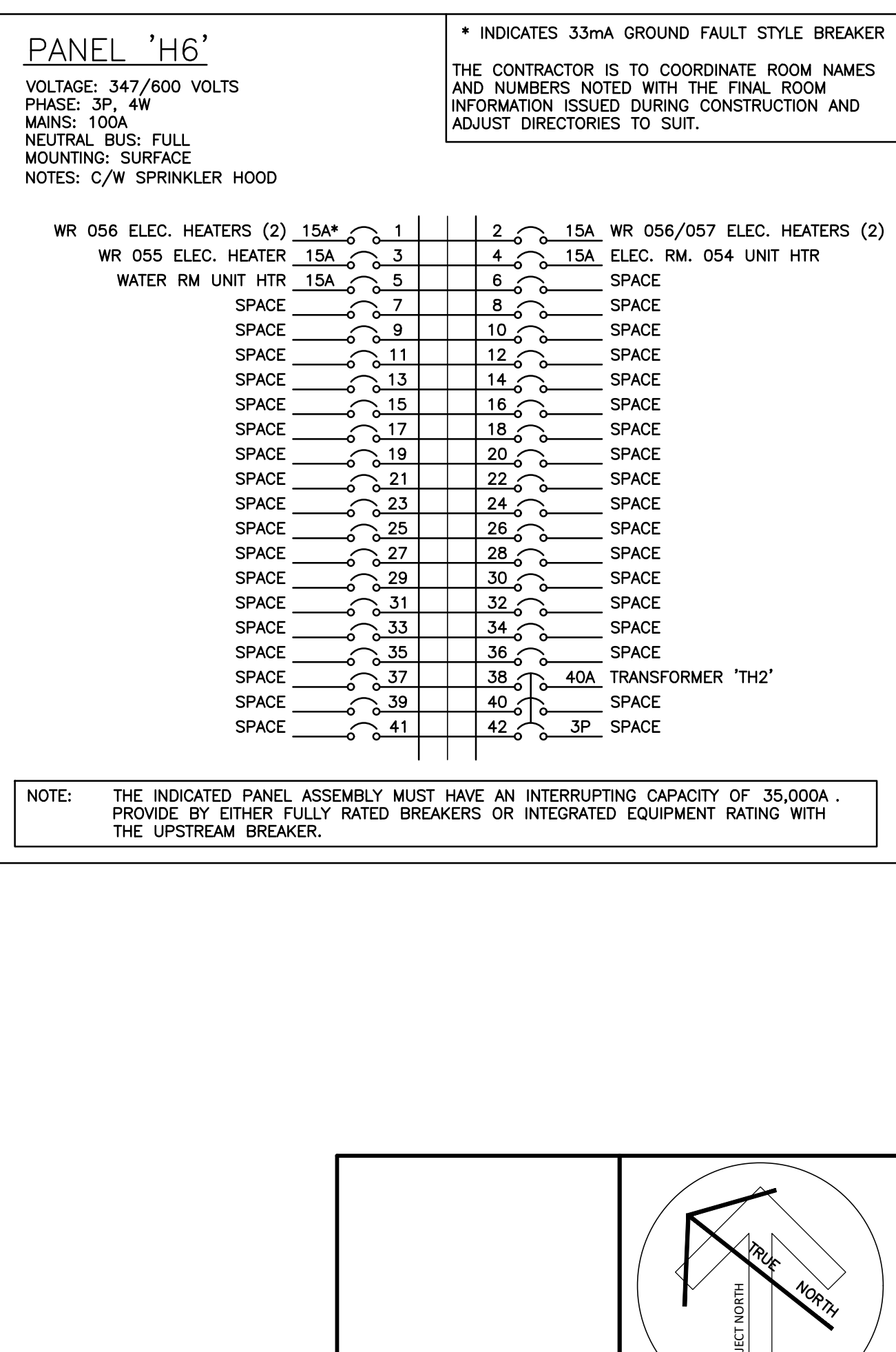
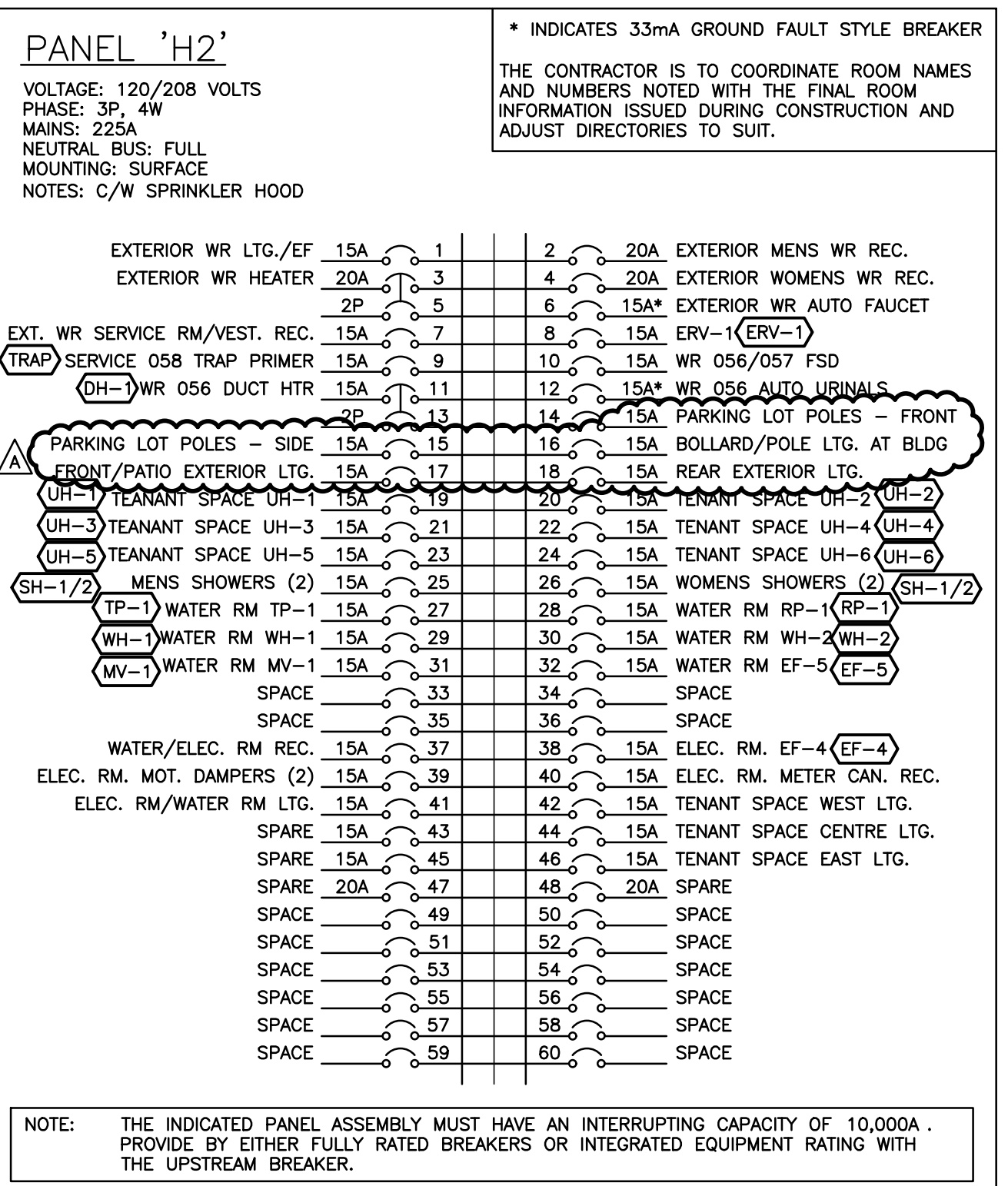
DEI
Consulting Engineers Inc.
MECHANICAL, ELECTRICAL, PLUMBING
1500 Highway 10, Suite 100
Windsor, Ontario N9A 6K5
Phone: 519-376-1975
Fax: 519-376-1976
www.dei-engineers.com

The contractor shall verify all dimensions and report any errors and discrepancies to the Consultant before commencing work. The drawings show general arrangement of services. Before any change or addition to the drawings, the contractor shall obtain written approval from the Consultant. The drawings are not intended to be used for any other purpose without the consent of the Consultant. Do not scale the drawing.

G. M. DIEMERT ARCHITECT INC.
Suite 201
457 Fourth Avenue East
Owen Sound, Ontario, N4K 2N5
Tel: 519-376-1975

Town of South Bruce Peninsula
315 George Street
Windsor, N6K 1Y2

GROUND FLOOR & ROOF PLANS POWER & SYSTEMS - RENOVATION
Drawing Number: 2404
Project Number: 2404
Original Drawing: 2404
Scale: 1:100



A	ADDENDUM 03	2025.11.11
RevID	Change Name	Date
4	ISSUED FOR TENDER	2025.11.11
3	ISSUED FOR REVIEW	2025.10.10
2	ISSUED FOR COORDINATION	2025.09.09
1	90% SET	2025.09.09
RevID	Issuance Name	Date

Drawing Name	
DISTRIBUTION RISER DIAGRAM	
Drawing Number:	Project Number:
E501	2404
ORIGINAL DRAWING SIZE: ARCH E (1220	